

## AirMagnet AirMedic™

AN AIRMAGNET MOBILITY SOLUTION



AirMagnet AirMedic™ is a revolutionary new Wireless LAN troubleshooting tool that provides full visibility into the RF and WiFi issues that cause the most common performance problems in 802.11 wireless networks. Wireless LANs require both a clean RF spectrum as well as reliable packet level signaling, and only AirMedic gives the option to see both sides of the equation in a simple all-in-one software application. With first-of-its-kind software, AirMedic turns the Intel wireless adapter in your laptop (5100/5300 series) into a professional grade spectrum analyzer, allowing you to see the physical RF landscape and any interference that may be affecting your network. In addition to spectrum analysis, AirMedic connects the dots by also showing actual WLAN and device performance using a second optional WiFi adapter. This puts everything you need in a simple, easy-to-use interface that puts the focus on solving real problems instead of theory.

### SIMPLE, POWERFUL WLAN TROUBLESHOOTING

Integrated Spectrum Analysis  
(uses built-in Intel 5100/5300 adapters)

Combined Spectrum and Basic WiFi Analysis  
(optional with secondary WiFi card)

2.4 and 5 GHz Band Support

14 Customizable Charts

- Real-Time FFT
- Spectrogram Plot
- Spectrum Density
- Spectrum Duty Cycle
- Device and Channel Speed
- Device and Channel Error Rates
- WiFi Device Configuration

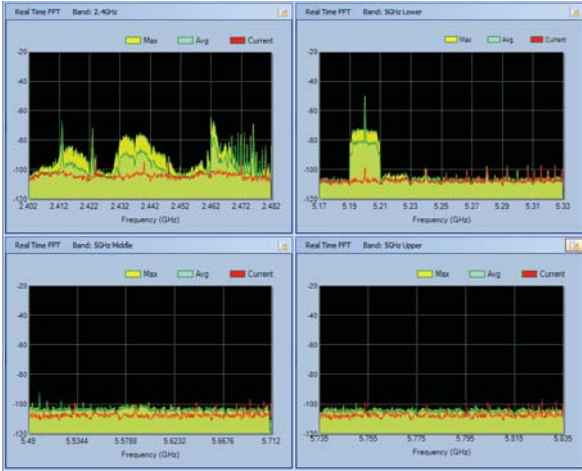
Highlight APs in Spectrum View

Copy and Paste any Chart





## Full Coverage of All WiFi Bands



See the entire 2.4 GHz and 5 GHz spectrum

AirMedic provides clear visibility into both the 2.4 GHz and 5 GHz WiFi bands and delivers the pinpoint resolution necessary to find and resolve interference and RF problems. Users can choose to view bands individually or leverage “mixed mode” for complete coverage of all WiFi bands.

AirMedic also provides unique visibility into the larger 5 GHz bands by providing views broken into lower, mid and upper sections of the 5 GHz spectrum. This ensures always see the same level of resolution and detail regardless of the portion of the spectrum, and that you see all of your RF environment no matter if you use 802.11a,b, g or n.

## Professional Spectrum Analysis

At the core of the AirMedic solution is a lab-quality spectrum analyzer that lets you look into the physical layer of your wireless LANs to identify interference and problems in the RF environment. However, unlike traditional spectrum analyzers that require extensive training, AirMedic offers multiple types of spectrum views each suited to revealing specific types of problems.

### Real-Time FFT

The bedrock of any spectrum analyzer, AirMedic’s FFT plot provides a real-time view into the RF energy in your environment. With XX resolution, the FFT gives you a live view into the RF landscape with current, max and average RF signal levels. Use the FFT to see distinctive RF interference patterns such as Bluetooth and other frequency-hopping devices.

### Spectrum Density

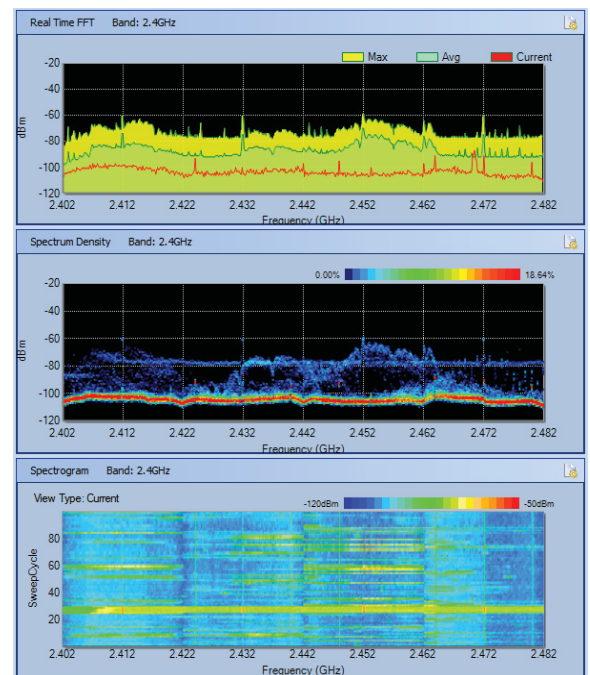
The Spectrum Density Plot provides a longer-term view into the network by showing not only live information but also signals that have been common during the current session. This allows you see the RF footprint and patterns of devices even if you didn’t see them in the FFT. This view is ideal for identifying infrequent transmitters, seeing signals that are related to single device as well as determining the noise floor of your environment.

### Spectrogram

The AirMedic Spectrogram provides scrolling history of the RF environment, allowing you to look back in time to see spikes or bursts of RF energy that may be causing network problems.

### Duty Cycle

Duty cycle tells you just how often an interfering signal is present. A high duty cycle means an interferer is constantly transmitting and will most certainly cause problems on the affected channel.



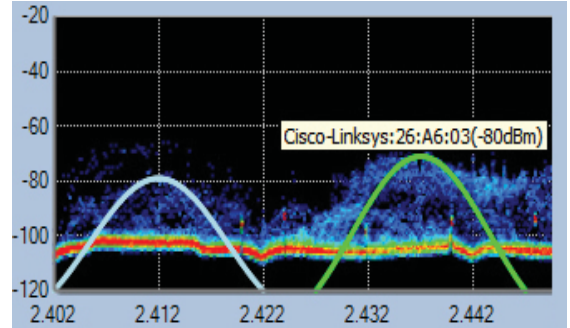
3 RF Perspectives in a Single View

# Solve Real WiFi Problems

While understanding the RF spectrum is critical, it is important to remember that the real end-goal is to repair and optimize actual WLAN performance. To this end, AirMedic introduces a revolutionary approach to wireless troubleshooting that combines the power of spectrum analysis with WiFi traffic and device analysis. Simply plug in any AirMagnet supported wireless adapter, and AirMedic instantly provides performance analysis for all WiFi devices and channels in the vicinity. This lets you correlate real WLAN performance with spectrum information to provide a clear straightforward answer to any interference or competition problem. Note that all features listed in the following section are optional and require the use of a AirMagnet supported WiFi adapter.

## See WiFi Devices on Your Spectrum Plots

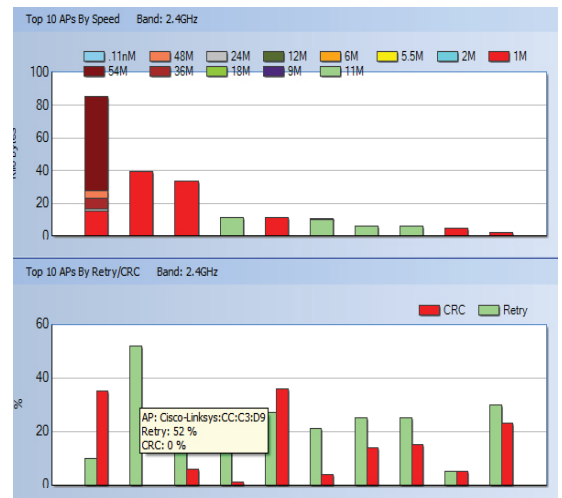
AirMedic provides an inventory of all WiFi devices in the environment and lets you visualize the impact of that device in the spectrum. Simply click an AP, SSID or channel and AirMedic provides color-coded outlines of the selected devices on the spectrum density graph. This makes it easy to determine if a particular RF signal is from a WiFi device or a non-WiFi source.



See Your APs on Spectrum Plots

## Find the Real WiFi Performance Impact of RF Issues

AirMedic provides revolutionary insight into the WLAN that gets problems solved faster. Find channels that are overloaded in terms of traffic or serving too many devices by using the Channel Utilization chart. Speed charts provide insight into efficiency problems in the network such as channels that are transmitting an unusually high percentage of slow 1 MB and 2 MB traffic. Charts of packet retry and error rates easily reveal areas where WiFi communications are failing. Most importantly, all of this information can be seen in a single view alongside spectrum information, meaning the relationship between spectrum and real performance is always clear and ensuring that you have full visibility into both WiFi and RF-based problems.



Find APs That Are Running Slow or Have Errors

## See All WiFi Devices

AirMedic also provides a full inventory of the WiFi devices in the environment including APs, end-user stations and even WiFi phones. A sortable table shows how devices are interrelated and even provides basic configuration information such as the type of security used (WPA2, WEP, etc) to help identify which devices are yours as opposed to neighbors or rogues.

# Built for Mobility



Developed in conjunction with Intel, AirMedic is the industry's first and only spectrum analyzer to use the built-in wireless adapters in modern laptops (Intel® 5100 series and 5300 series wireless adapters). This integrated approach means that there are no single-use spectrum cards that can get lost or broken, nor do you have to worry about having special card slots on your PC to fit your spectrum adapter. Instead AirMedic enables you to do more with the hardware that you already own. Additionally, using the integrated adapter in your PC provides the same real-world perspective that end-users in your network will experience. This means that your troubleshooting tools stay grounded in the real world and are always ready to go when you need them.

# WiFi Made Easy

The AirMedic software is designed around a simple interface with one goal in mind – get problems fixed fast. Instead of navigating through multiple pages or pouring over endless decodes, AirMedic boils the network down to its most core components and delivers them in a single integrated view.

A single mouse click provides instant access to any of the 14 available RF and WiFi (optional) charts, ensuring that you can always find the information that you need. Built-in “Easy Views” provide chart sets for troubleshooting the most common WLAN problems, or users can save their own customized views tailored to their troubleshooting methods. AirMedic also makes it easy to capture information for reporting with simple copy-and-paste support for all charts and graphs in the solution.

## Product Facts

**Part Number:** B4710

### Minimum System Requirements:

Notebook based on Intel® Centrino® 2 Processor technology (WiFi Link 5100 or 5300)

Operating Systems: Microsoft® Windows Vista™ Business/Ultimate (SP1), or XP™ Professional (SP3)

Microsoft .NET Framework 2.0

Intel® Core™ 2 Duo 2.00 GHz or higher recommended

Supported AirMagnet WiFi Adapter (Optional for viewing WiFi data)

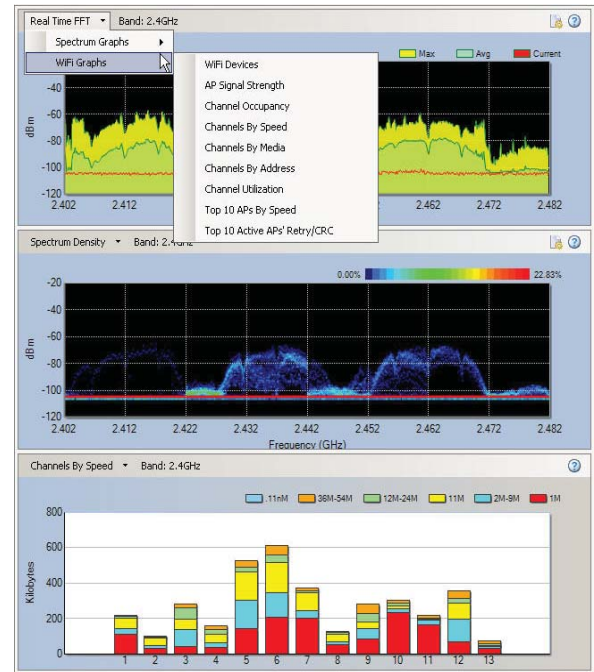
1 GB Memory (2 GB recommended)

150 MB of available hard drive space

**For NetBook platform support:** Intel® Atom N270/1.6 GHz CPU, Microsoft® Windows XP™ Home Edition, 1 GB memory (2 GB recommended), 1024X600 resolution; Microsoft .NET Framework 2.0; Supported AirMagnet WiFi Adapter (Optional for viewing WiFi data); Additional ExpressCard slot or USB port (whichever applicable for viewing Wi-Fi data)

**Patents:** U.S. Patent No. 7009957, 7236460, 7292562, 7289465, ZL030807586, 7385948 and 7130289. Additional patents pending.

AirMagnet, AirMedic, the AirMagnet logo are trademarks of AirMagnet Inc. All other product names mentioned may be trademarks of their respective companies



Customize Your View With Access to 14 Charts and Graphs

## For More Information

Buy Now: <http://www.airmagnet.com/estore/software/>

SALES: [http://www.airmagnet.com/company/contact\\_airmagnet.php?type=sales](http://www.airmagnet.com/company/contact_airmagnet.php?type=sales)



Corporate Headquarters:  
830 E. Arques Ave.  
Sunnyvale, CA 94085 - United States  
Tel: +1 408.400.1200 / Fax: +1 408.744.1250



EMEA Headquarters:  
6-9 The Square, Stockley Park, Uxbridge,  
Middlesex UB11 1FW, United Kingdom  
Tel: +44 203 178 7926 / Fax: +44 870 139 5156