



ICON Manager

Intuitive management interface for Xiotech's Emprise™ 7000 and Magnitude 3D® storage systems



Too Much Data

and too few people to manage it. It's a problem that nearly all organizations face these days, and one that requires a truly innovative solution.

Xiotech Corporation has always delivered storage systems that are easy to use, helping organizations make the most of their resources. Users consistently cite how the systems' simplified management saves them time and money. But even a good thing can get better...

The Solution: ICON Manager

Xiotech's ICON Manager has completely changed the storage management landscape, providing the easiest storage and server administration ever available.

ICON Manager is the first and only user interface to bring storage management and storage-related server administration together in one place. Even novice administrators can effortlessly manage storage just as they do Windows volumes. Creating volumes and assigning them to servers and virtual machines (VMs) is a simple point-and-click operation from a single console.

For more experienced users, ICON Manager offers fine-grained control of advanced functions. Other views assist with monitoring system health, managing physical components, and more.

The innovation does not stop there. ICON Manager is the *only* storage management platform designed on an industry-standard [Web Services](#) foundation, providing seamless integration with other Web Services-enabled programs, such as Java, Visual Basic, and Windows PowerShell. With the ICON Services Software Development

Kit (SDK), you can easily customize reports and automate storage functions to meet your unique needs. Web Services also enables Xiotech to deliver advanced capabilities faster than would otherwise be possible—thus evolving the interface to meet your needs for years to come.

Finally, [Intelligent Provisioning](#), another industry first, automatically grows storage volumes based on policies that you set. You use capacity only as you need it, without the risk of over-subscription that is common with other systems.

Benefits

Xiotech's ICON Manager:

- Consolidates and simplifies storage provisioning and management tasks—easy enough for even the occasional storage administrator.
- Eliminates the need to work with both array and server management consoles for volume provisioning and assignment.
- Removes complex, manual, and repetitive tasks, along with associated possibility for errors.
- Reduces total cost of ownership (TCO).

The Result

Jon Toigo of the Data Management Institute sums it up well: "Xiotech has shown the way to true management nirvana with its Web services-based management architecture. ICON Manager and its supporting service layer is worthy of emulation by every storage vendor out there."

Multiple Views for Efficient Management

ICON Manager provides multiple logical and physical views, so you can efficiently manage storage and view system information in the most appropriate context for your needs. Not only does this save you time, but it reduces the time it takes for new administrators to get up to speed.

Server View: Easiest Management for Windows and Linux

ICON Manager’s Server View makes creating and managing storage for Windows and Linux servers breathtakingly simple.*

- Uses a familiar Windows tree layout to display visible servers and available storage volumes.
- Displays basic volume attributes, including total capacity, used space, and free space.
- Enables you to create (and change) storage volumes and assign them to servers with a few clicks from a single console—no need to go back and forth between storage and server interfaces.
- Offers wizards to guide you through common tasks, speeding administration and reducing the possibility for errors.

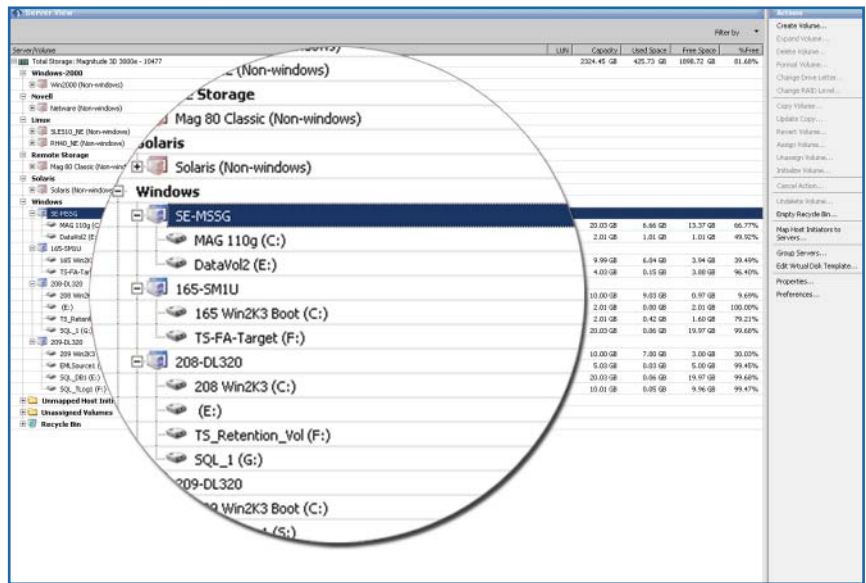


Fig. 1. ICON Manager Server View

Storage View: Powerful Control for Multiple Platforms

Storage View provides intuitive storage management for all operating systems supported by the storage system.

- Uses a more traditional storage management layout, based on virtual disks (VDisks).
- Enables fine-grained control and advanced functionality, such as VDisk mirroring.
- Provides an “Actions” pane for fast completion of common tasks, such as creating, expanding, copying, and deleting VDisks.
- Allows you to organize the screen by VDisk activity, host initiators, mirrors, and applications.

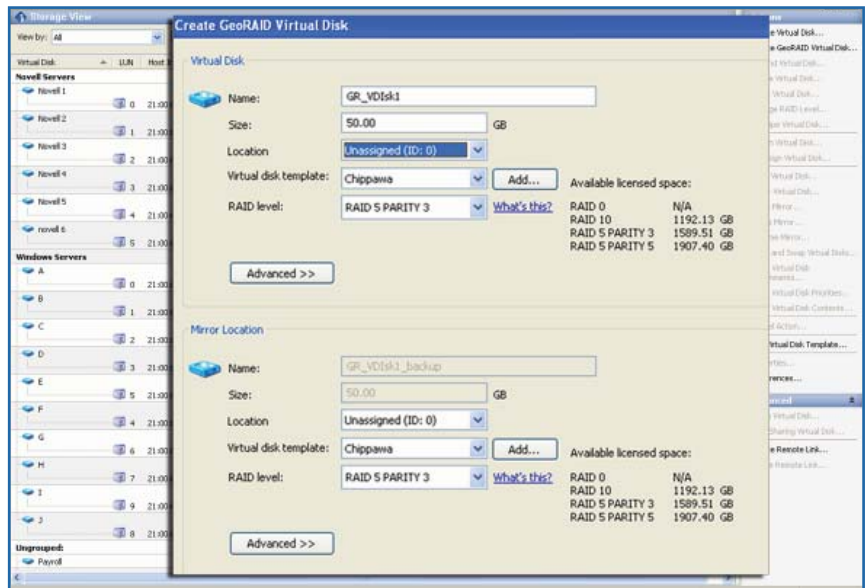


Fig. 2. ICON Manager Storage View

* Some restrictions apply; please consult with your XioTech representative for additional information.

Virtual View for VMware

With Virtual View, you can easily explore your VMware infrastructure and map the relationships among storage, servers, and VMs. You also can safely and rapidly provision, monitor, and manage storage with just a few clicks from a single interface.

Virtual View saves you time, removes the requirement of working with multiple consoles, and—through integrated best practices—helps you make the right storage deployment choices for your applications.

- Enumerates and maps all VMware systems, storage relationships, and properties in a unified view.
- Provides end-to-end storage provisioning from a single interface.
- Delivers easy ongoing monitoring and management of VM storage.

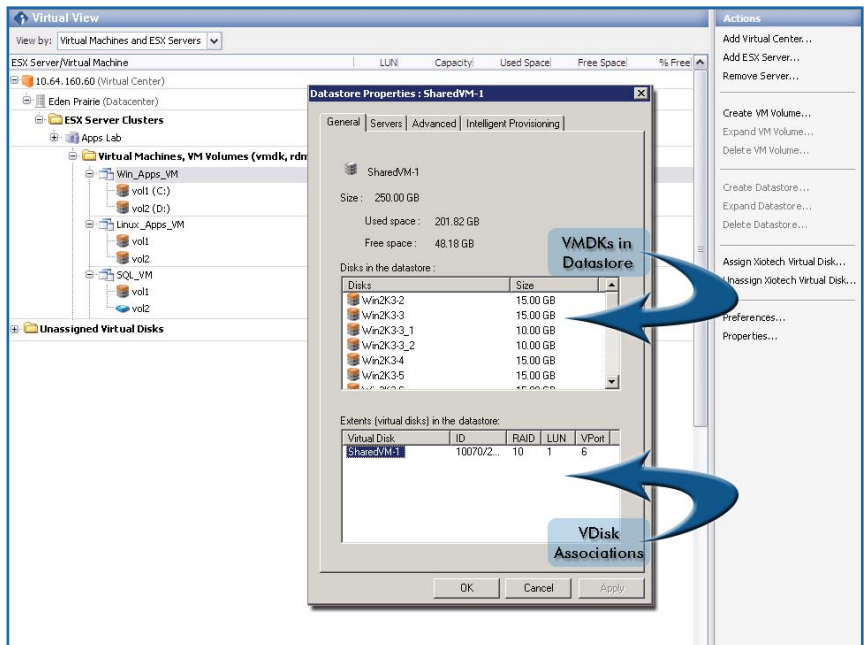


Fig. 3. ICON Manager Virtual View

Physical View

Physical View displays the physical components and status of your system.

With Physical View, you can:

- View specific components' properties and status.
- Efficiently add or remove physical components.
- Restripe your data across new or different drives.
- “Beacon” a disk (cause the physical disk to flash) so you can clearly identify which disk you need.

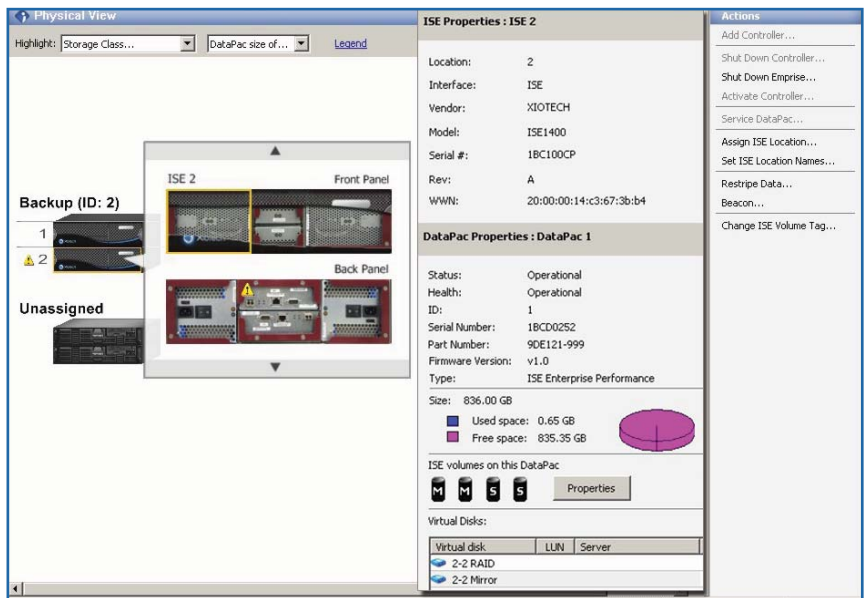


Fig. 4. ICON Manager Physical View

System View

System View shows high-level information about the storage cluster. At a glance, you can see how the cluster's storage is provisioned and if you need to make any changes. System view displays information such as performance statistics; number of physical disks, virtual disks, and virtual links; total capacity; and capacity by RAID type.

Status, Logging, and Tools Views

These views support monitoring, reporting, license management, and diagnostic actions. In these views, you can configure management ports, install new licenses, and set parameters for ActiveWatch, Xitech's proactive support service that remotely monitors your system and alerts you of any potential issues—before they affect system availability.

ICON Services: Ultimate Control

Xiotech is the first storage vendor to use Web Services technology for its management platform, and the only one to give you a way to utilize common programming tools to automate and control your storage systems.

With the [ICON Services SDK](#), you can:

- Use the tools you already know (C++, Visual Basic, Java, PowerShell, or any other Web Services capable platform) to control your storage system.
- Quickly create simple reports, such as an Excel spreadsheet or chart to graphically display storage system statistics (e.g., capacity utilization).
- Design applications to control your storage in conjunction with other tools. With the ability to automate complex or repetitive tasks, you can save a lot of administration time, while greatly reducing the possibility of errors.

With the [ICON Services Developer Forum](#) you even can share ideas and Web Services applications with other users. The forum is moderated by Xiotech employees who have extensive experience with ICON Services, to help ensure a quality experience.

Intelligent Provisioning: Automated Expansion

Intelligent Provisioning is a true “set it and forget it” method of expanding storage volumes in Windows environments. Simply create the volume (a few clicks) and set a few parameters; then the volume grows automatically based on the policies you set. This utilizes just the capacity you need when you need it, saving you money on up-front capacity purchases.

Intelligent Provisioning provides the benefits of thin provisioning, but with one major difference. Whereas thin provisioning may promise more space than is available (which can lead to data loss), Intelligent Provisioning grows volumes within the bounds of your system’s *actual* capacity. So there is no risk of over-provisioning or associated data loss.

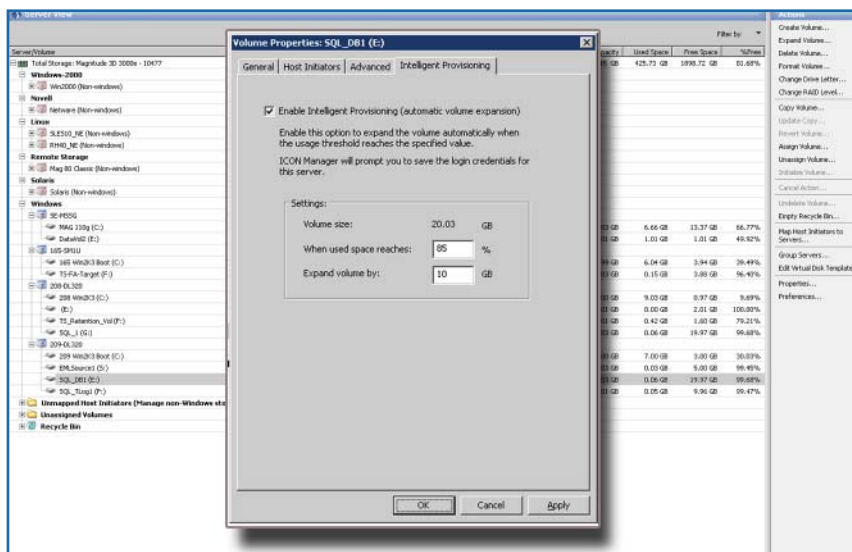


Fig. 5. Intelligent Provisioning

Contact Xiotech today to learn how ICON Manager can help solve your storage management challenges. Call us toll free at 1.866.472.6764, visit www.xiootech.com, or email us at info@xiootech.com.



6455 Flying Cloud Drive : Eden Prairie, MN 55344-3305 : 1.866.472.6764 : www.xiootech.com

Xiotech, Magnitude, Magnitude 3D, and TimeScale are registered trademarks of Xiotech Corporation. Emprise, ISE, GeoRAID, Dimensional Storage Cluster, and DataScale are trademarks of Xiotech Corporation. Product names mentioned herein may be trademarks and/or registered trademarks of their respective companies.